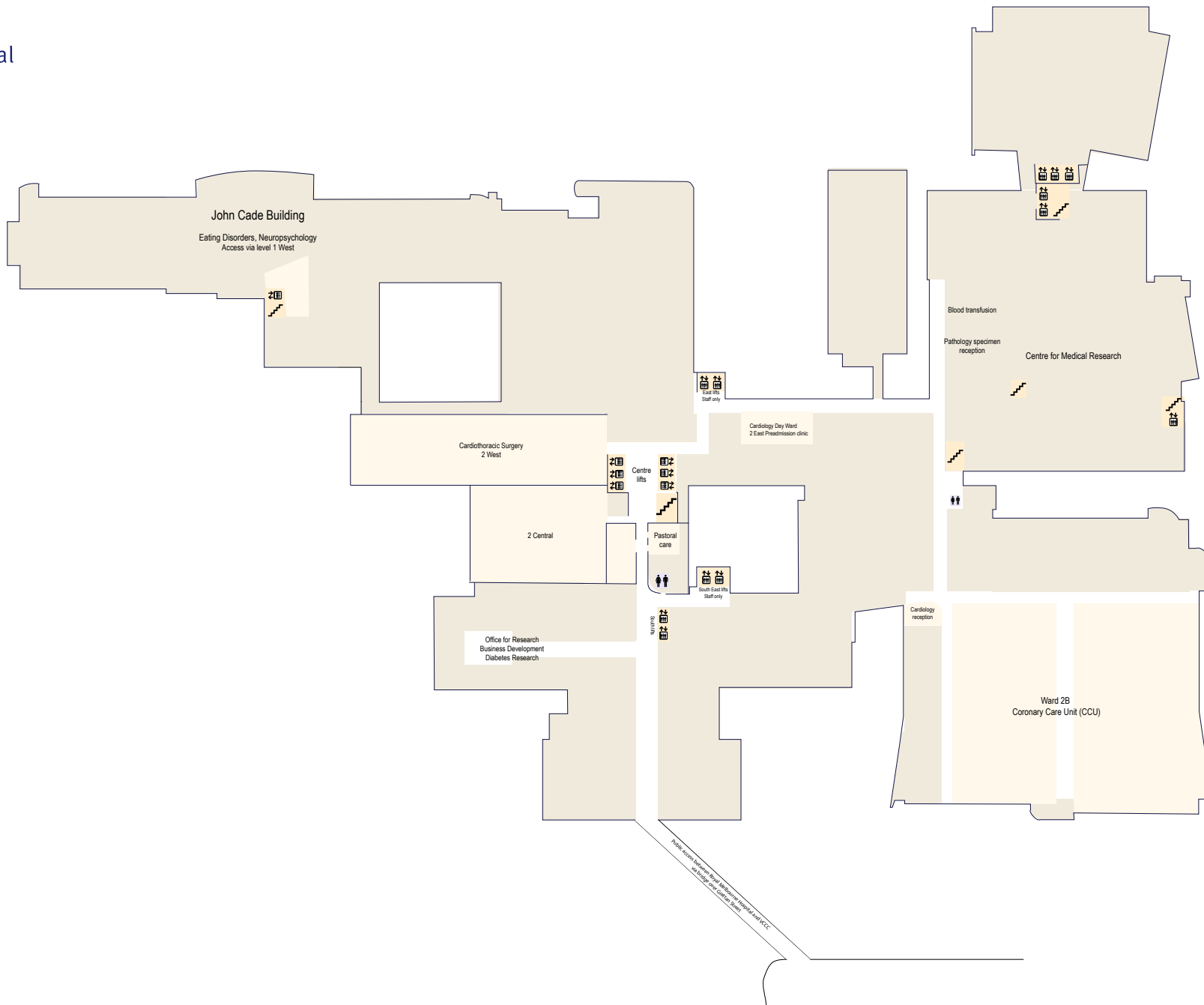


Level 1, City Campus, 300 Grattan Street, Parkville

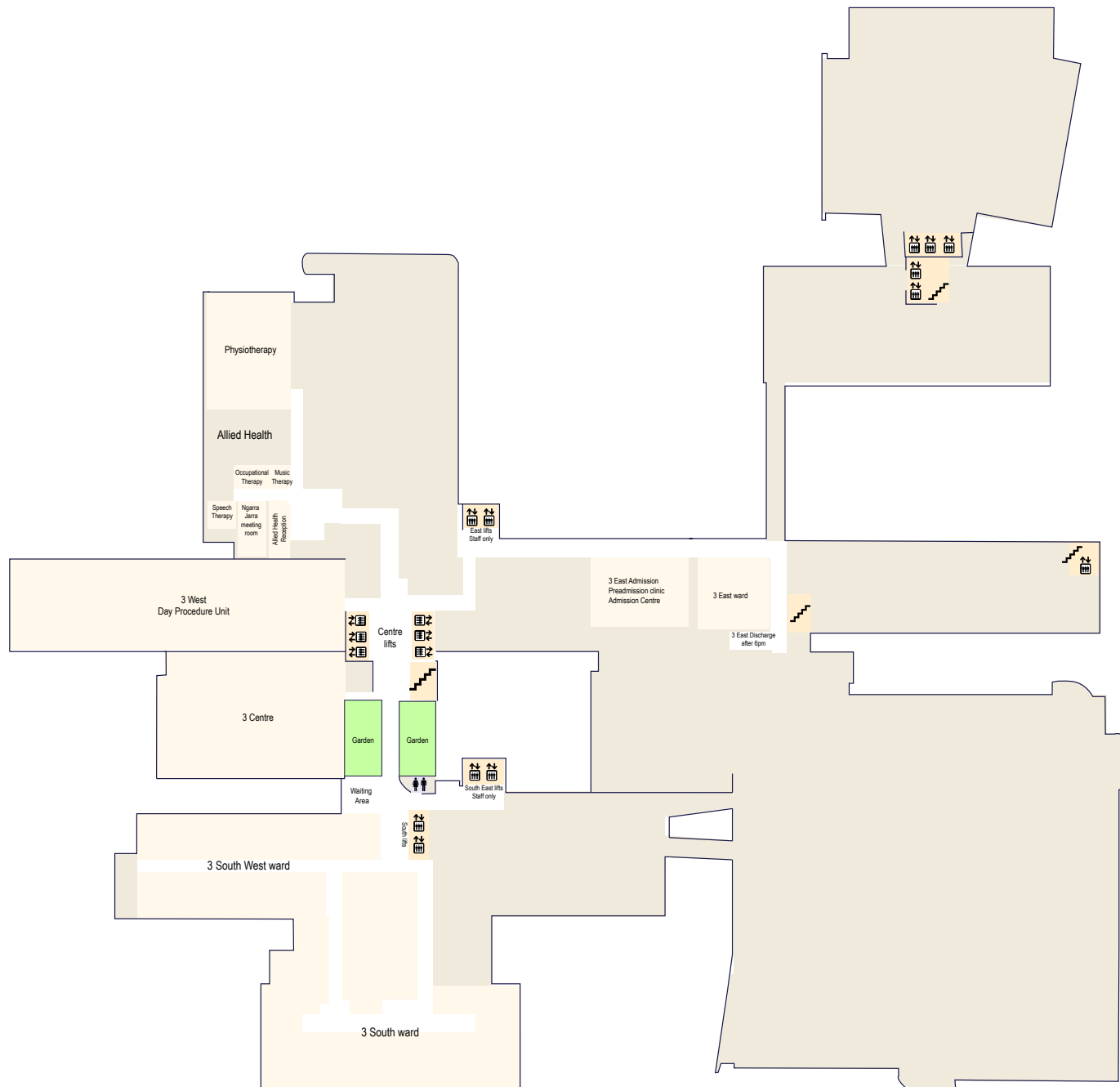
Last updated September 2016 www.thermh.org.au/contact-us (03) 9342 7000

First in Care,
Research and
Learning

CARING
EXCELLENCE
INTEGRITY
RESPECT
UNITY

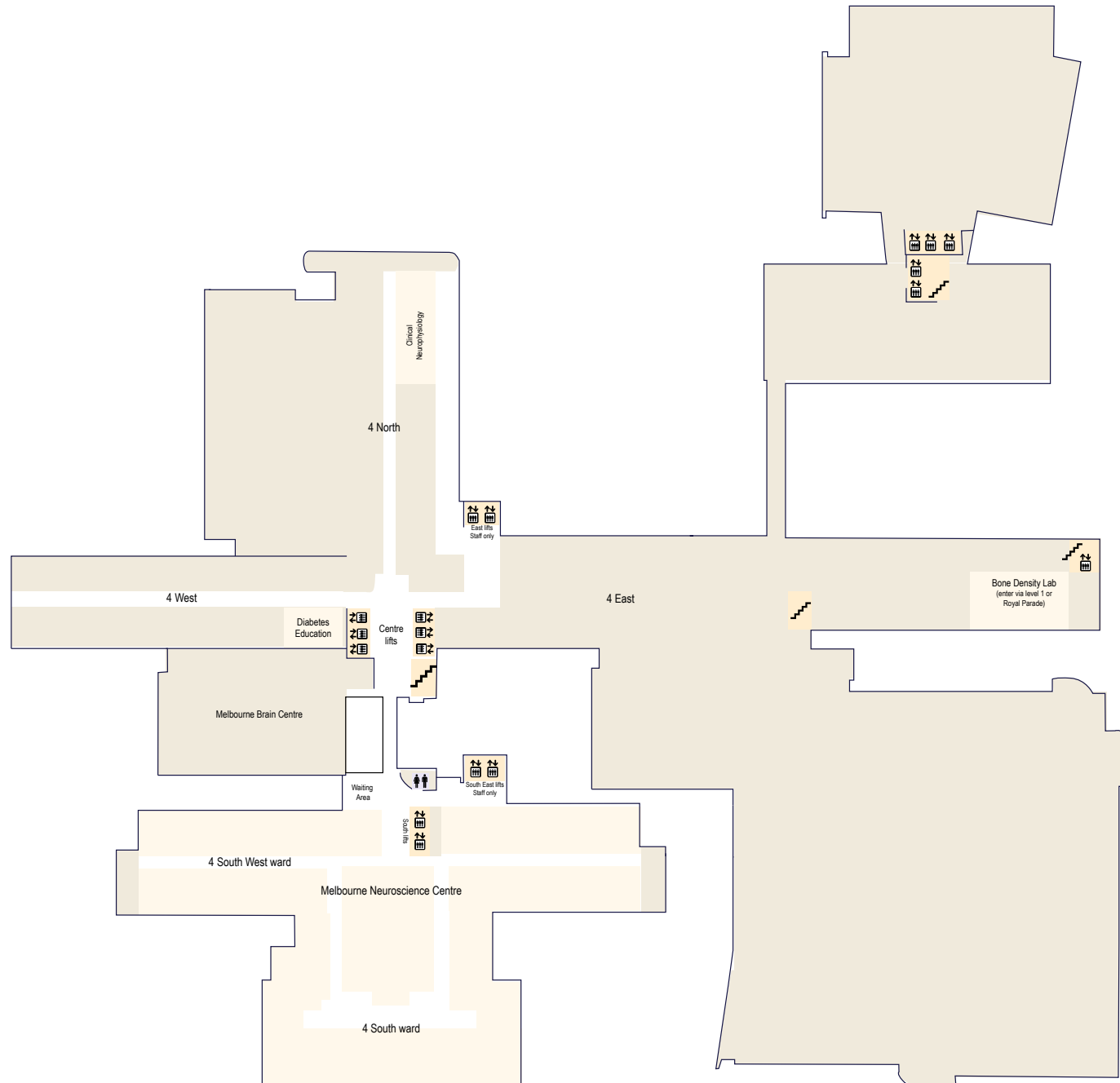


Level 2, City Campus, 300 Grattan Street, Parkville



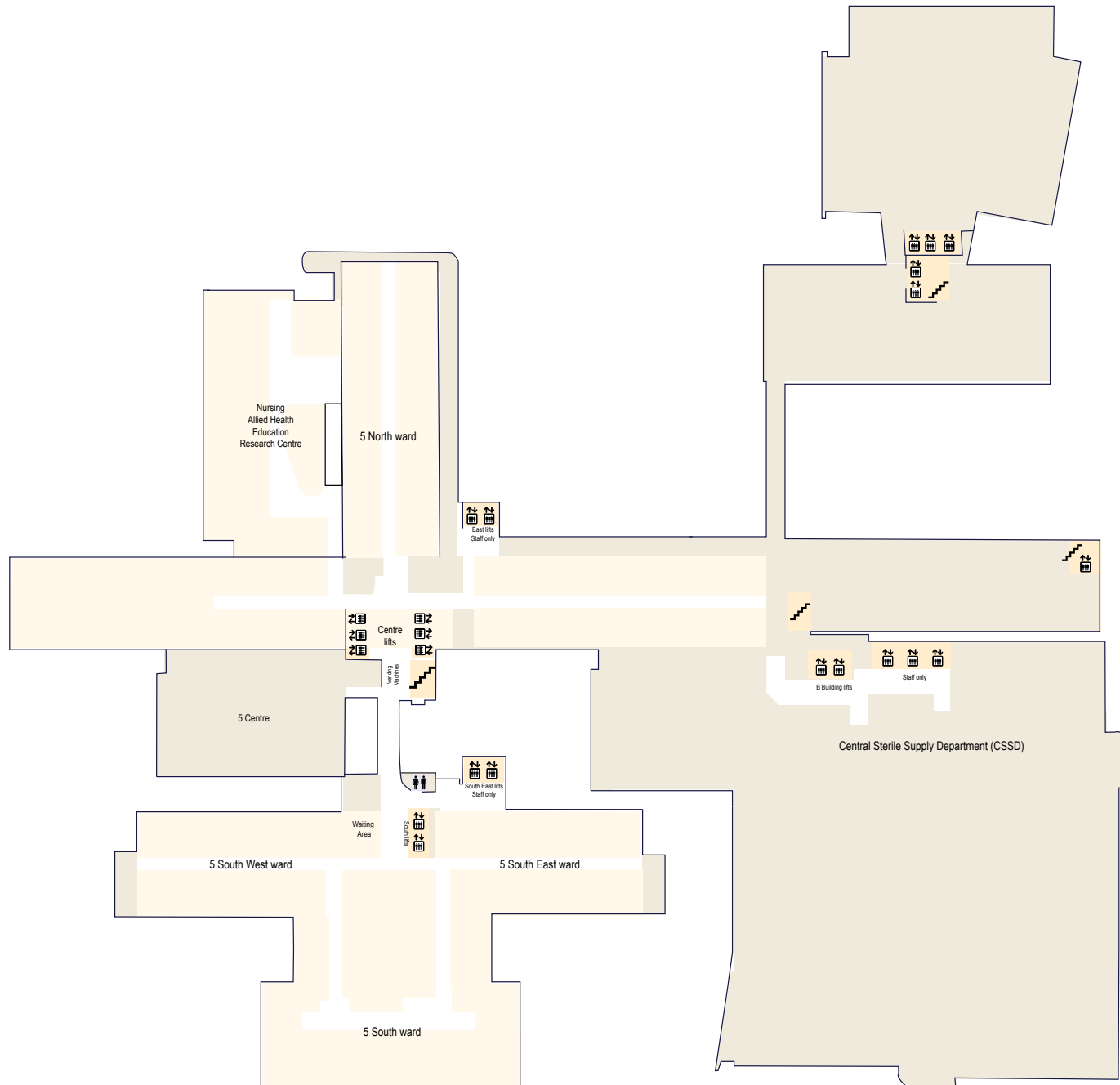
Level 3, City Campus, 300 Grattan Street, Parkville

Last updated September 2016 www.thermh.org.au/contact-us (03) 9342 7000



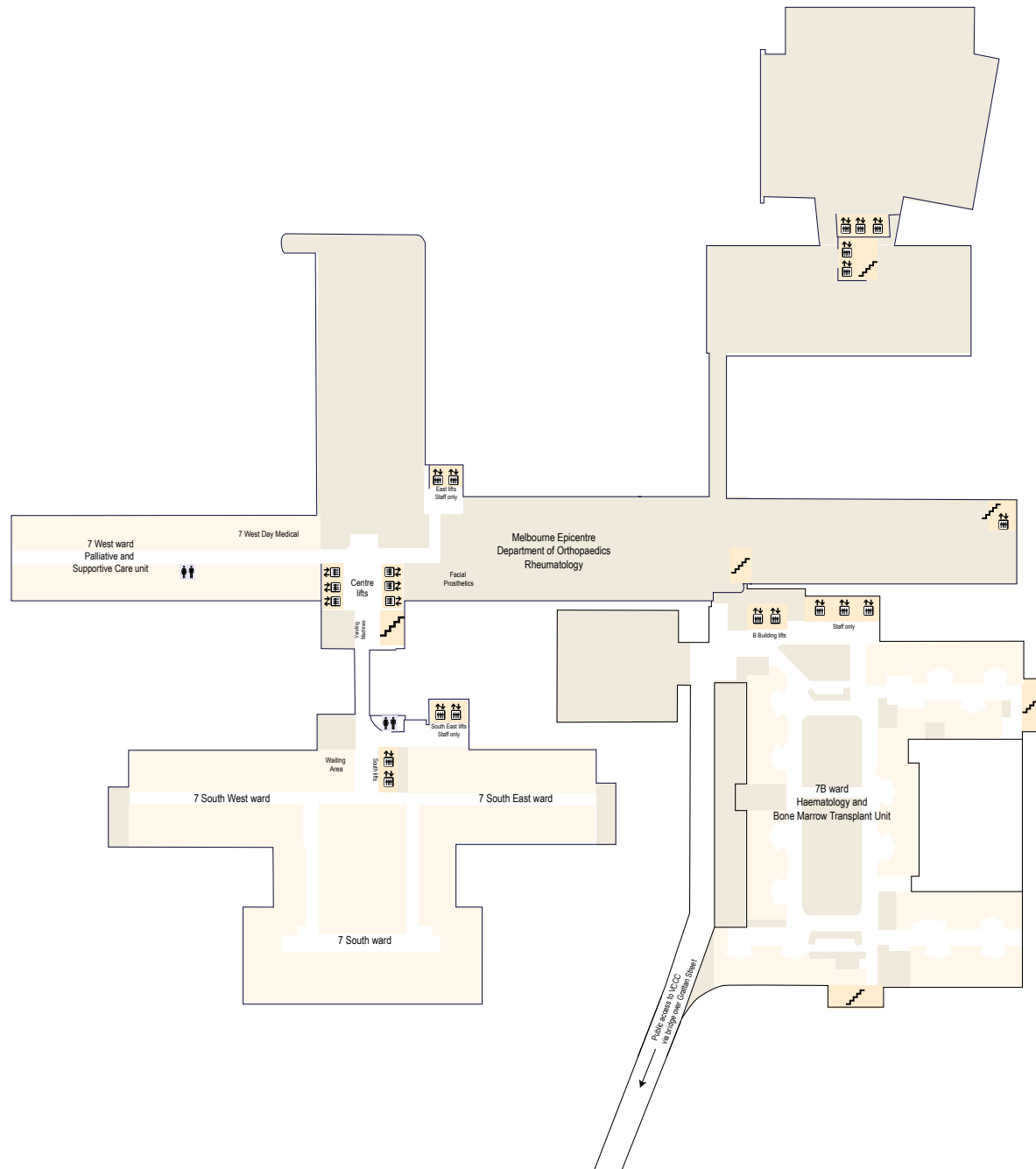
Level 4, City Campus, 300 Grattan Street, Parkville

Last updated September 2016 www.thermh.org.au/contact-us (03) 9342 7000



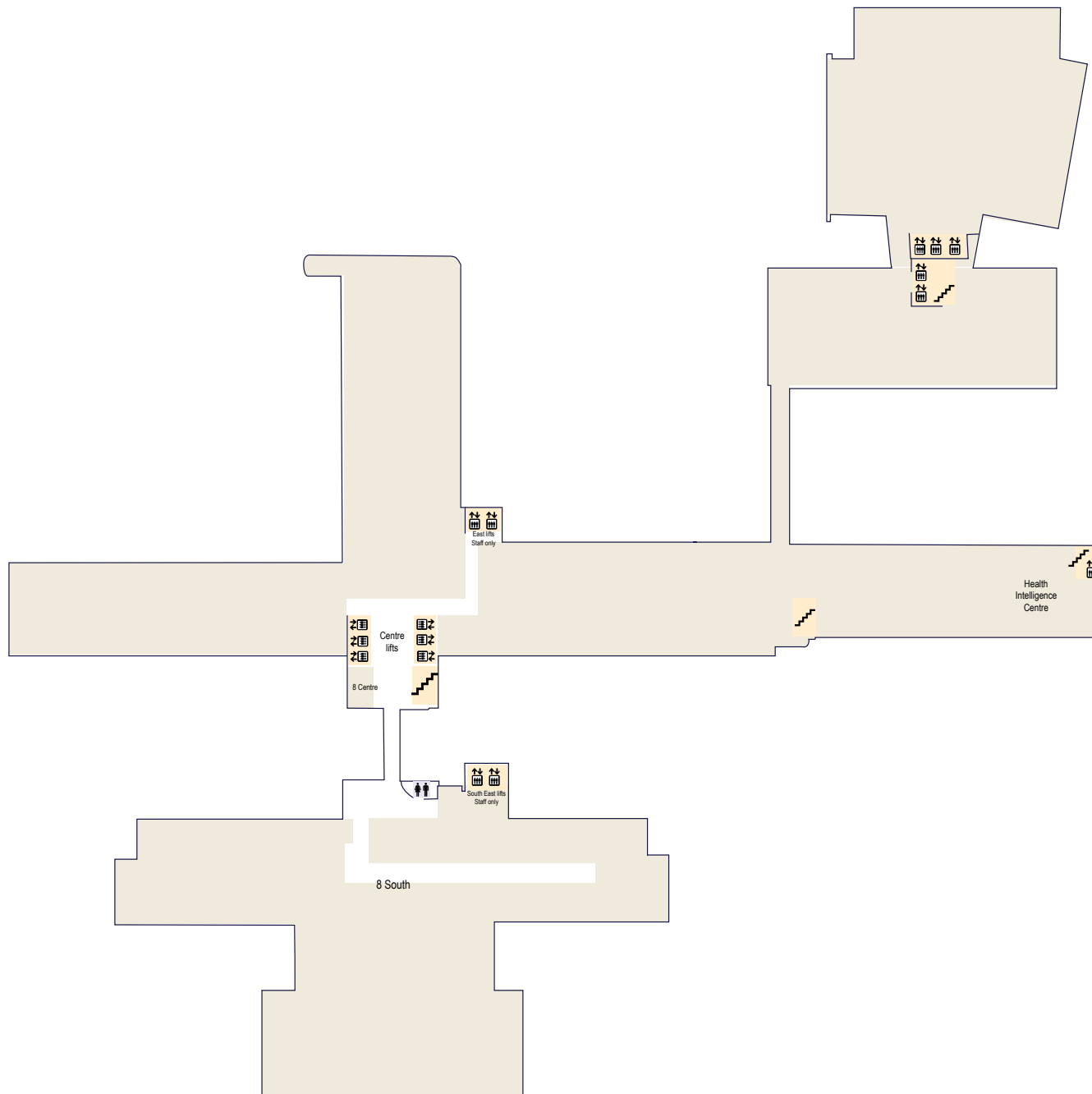
Level 5, City Campus, 300 Grattan Street, Parkville

Last updated September 2016 www.thermh.org.au/contact-us (03) 9342 7000



Level 7, City Campus, 300 Grattan Street, Parkville

Last updated September 2016 www.thermh.org.au/contact-us (03) 9342 7000

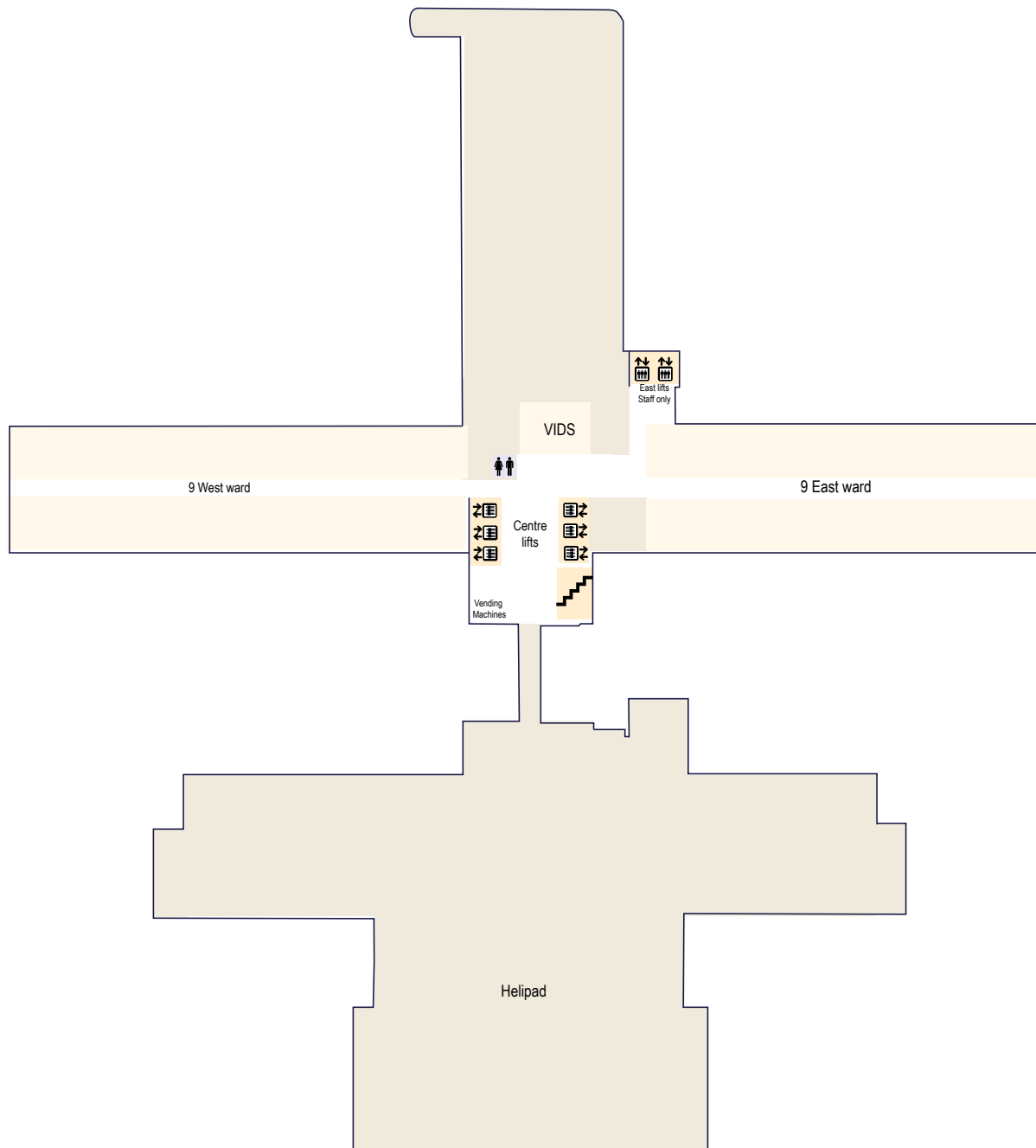


Level 8, City Campus, 300 Grattan Street, Parkville

Last updated September 2016 www.thermh.org.au/contact-us (03) 9342 7000

First in Care,
Research and
Learning

CARING
EXCELLENCE
INTEGRITY
RESPECT
UNITY



Level 9, City Campus, 300 Grattan Street, Parkville

Last updated September 2016 www.thermh.org.au/contact-us (03) 9342 7000